

# SSC Auxiliary Fleet Sailing Instructions

## 2018 Sunday Funday Series

### 1 RULES

- 1.1 The races/series will be governed by the rules as defined in the Racing Rules of Sailing for 2017-2020. (RRS)
- 1.2 The PHRF-LE Code of Regulations will apply.
- 1.3 The T-10 Class One Design Rules will apply.
- 1.4 These Sailing Instructions (SI's) will apply.
- 1.5 Race dates and times are specified in the SSC 2018 Race Schedule.
- 1.6 The NOR issued by each fleet will apply.

### 2 NOTICES TO COMPETITORS & CHANGES TO THE SI'S

Notices to competitors and changes to these SI's will be posted on the Race Notice bulletin board located on the east wall of the SSC Clubhouse. Any change to these SI's will be posted no later than 1 hour prior to the first class start.

### 3 SIGNALS MADE ASHORE

- 3.1 Signals made ashore shall be displayed from the flag stand on ESCORT I
- 3.2 When flag AP is displayed ashore, '1 minute' is replaced with 'not less than 60 minutes' in the race signal AP.

### 4 CLASS FLAGS

The class flag will be a blue flag with white letters " PHRF"

### 5 COURSE DESIGNATION

The number of the course to be sailed will be displayed on the rack of the RC signal boat.

### 6 MARKS

- 6.1 The first mark shall be an inflatable or a flag on a pole. (Does not apply to Course #3)
- 6.2 Subsequent marks will be government marks in Sandusky Bay. See Appendix "A"

### 7 PENALTY SYSTEM

RRS 44.1 is changed so that the Two-Turns Penalty is replaced by the One-Turn Penalty.

### 8 THE START

- 8.1 The starting line shall be between the staff displaying an orange flag on the signal boat and the nearby flag on a pole or an inflatable mark.
- 8.2 The start signal sequence shall be:
  - Class flag up at 5 minutes
  - Prep flag (P) up at 4 minutes
  - Prep flag (P) down at 1 minute
  - Class flag down at the start
- 8.3 All auxiliary fleets shall start at the same time.

### 9 THE FINISH

- 9.1 The finish line will be between the SSC Marina Entrance Mark (to starboard) and the nearby flag on a pole or an inflatable mark set outside the Entrance Mark (to port).
- 9.2 Finishers must record their finish time. Finish times must be reported to PC Eric Winkel.

### 10 COURSES

The courses to be sailed are described in Appendix "A"

### 11 TIME LIMITS

- 11.1 If no boat has passed the first government mark within 1 hour of their start, the race will be abandoned for all classes.
- 11.2 If the first boat within each fleet has not finished within two hours of the start, the race will be abandoned for that fleet.

### 12 PROTESTS AND REQUESTS FOR REDRESS

Protest forms are available in the Commodore's Room. Protests and requests for redress shall be submitted within hour after the RC boat docks.

### 13 SCORING

RRS A4 low point scoring system shall apply.

### 14 SAFETY REGULATIONS

- 14.1 When Code Flag "L" is displayed, all boats racing are required to sail past the transom of the RC signal boat and supply their boat name, sail numbers and class to be raced.
- 14.2 A boat that retires from the race shall notify the race committee as soon as possible.

### 15 RADIO COMMUNICATION

- 15.1 Except in an emergency, a boat shall neither make wireless transmissions while racing nor receive wireless communications not freely available to all boats. This restriction also applies to mobile telephones.
- 15.2 Except for emergencies, communications with the race committee shall not be initiated during any starting sequence.
- 15.3 SSC RC boats use VHF channels 68 and/or 72 for race communications.
- 15.4 Race committee boats will monitor channel 16, as required by FCC rules, whenever not actively communicating on another channel.

### 16 DISCLAIMER OF LIABILITY

Competitors participate in the series entirely at their own risk. See RRS Rule 4 "Decision to Race". The Sandusky Sailing Club will not accept any liability for material damage or personal injury or death sustained in conjunction with or prior to, during, or after the races within this series.

### 17 QUALIFYING FOR THE SERIES

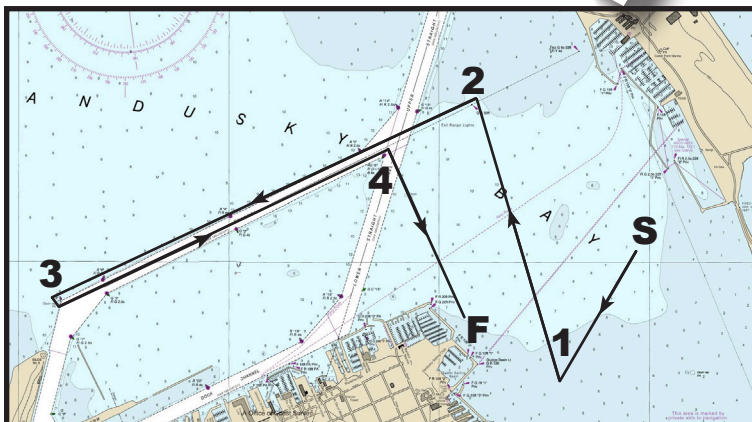
Competitors must start one more than half of the races scored in order to qualify for the series.

Published 25 April 2018  
Jim Keane RC Co-Chairman



# Sunday Funday

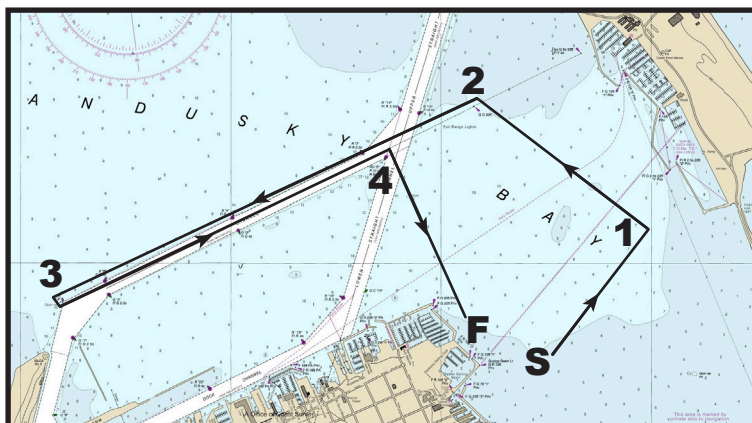
## Appendix A



### COURSE #1

#### Marks:

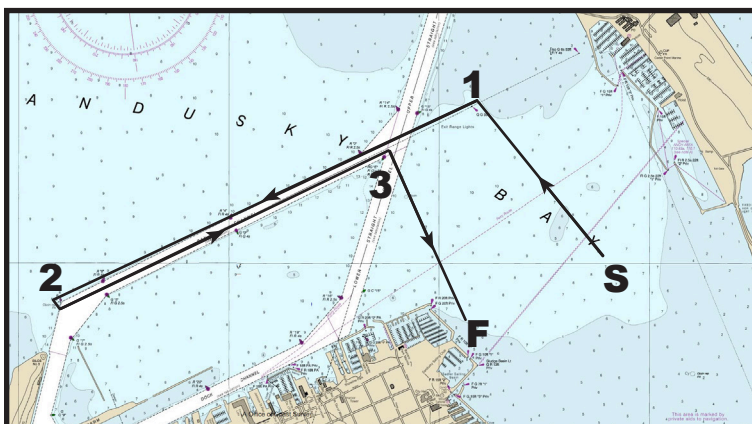
- S) Start between the staff displaying an orange flag on the signal boat and the nearby flag on a pole or an inflatable mark. Chart shows approximate position.
- 1) Inflatable mark or a flag on a pole to starboard. Chart shows approximate position.
  - 2) Range Light (Q G 33ft) to port.
  - 3) Channel Marker (R N "8") to port.
  - 4) Mid-Channel Marker (RG "E" FI 8s) to starboard.
- F) Finish with SSC Entrance Buoy to starboard and the nearby flag on a pole or an inflatable mark to port.



### COURSE #2

#### Marks:

- S) Start between the staff displaying an orange flag on the signal boat and the nearby flag on a pole or an inflatable mark. Chart shows approximate position.
- 1) Inflatable mark or a flag on a pole to port. Chart shows approximate position.
  - 2) Range Light (Q G 33ft) to port.
  - 3) Channel Marker (R N "8") to port.
  - 4) Mid-Channel Marker (RG "E" FI 8s) to starboard.
- F) Finish with SSC Entrance Buoy to starboard and the nearby flag on a pole or an inflatable mark to port.



### COURSE #3

#### Marks:

- S) Start between the staff displaying an orange flag on the signal boat and the nearby flag on a pole or an inflatable mark. Chart shows approximate position.
- 1) Range Light (Q G 33ft) to port. (NOTE: There is NO Inflatable mark on course #3)
  - 2) Channel Marker (R N "8") to port.
  - 3) Mid-Channel Marker (RG "E" FI 8s) to starboard.
- F) Finish with SSC Entrance Buoy to starboard and the nearby flag on a pole or an inflatable mark to port.